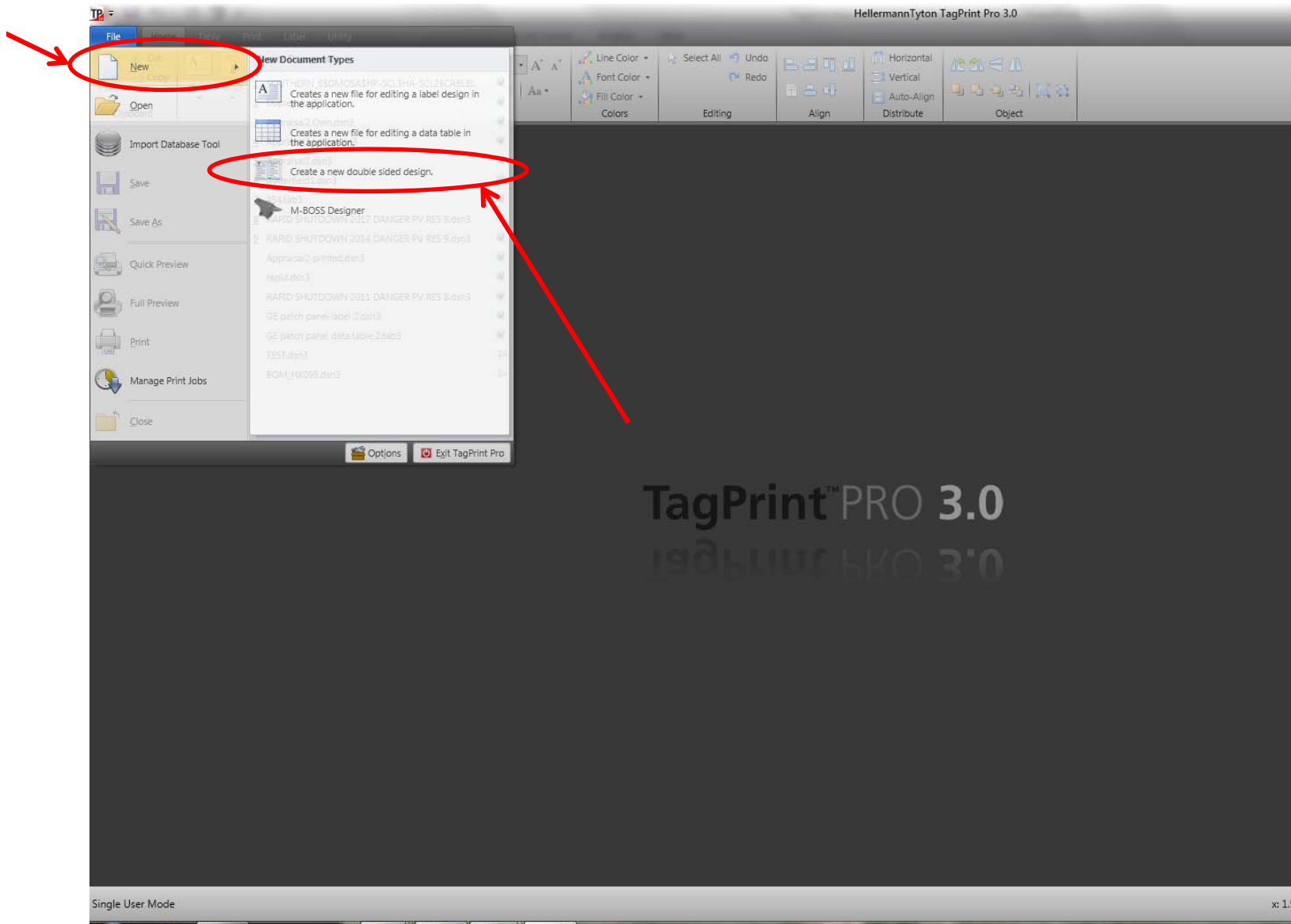


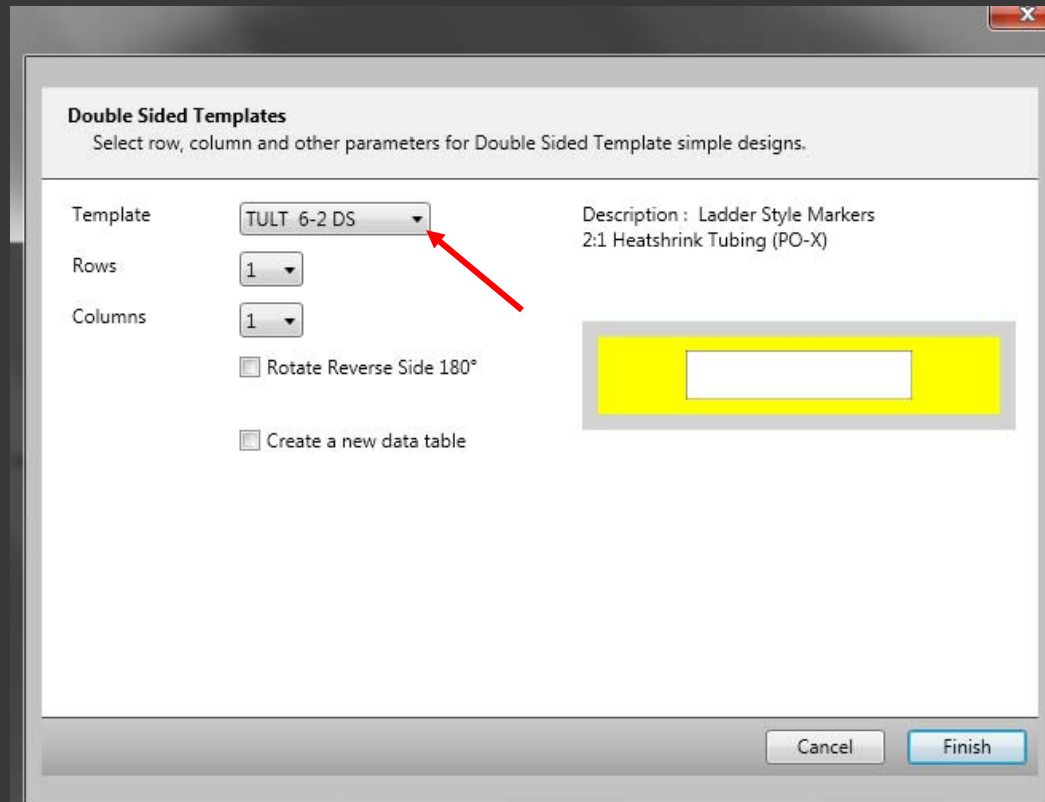
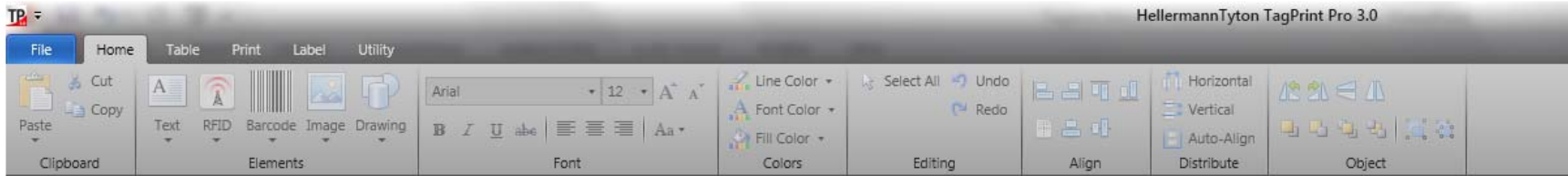
# DUPLEX MODE

## Creating Double Sided Designs

Designs made using duplex mode always print the same data on both the top and bottom sides of the marker. For double sided printing that required different text on the top and bottom of the marker, follow the instructions for double sided printing starting on slide 203.

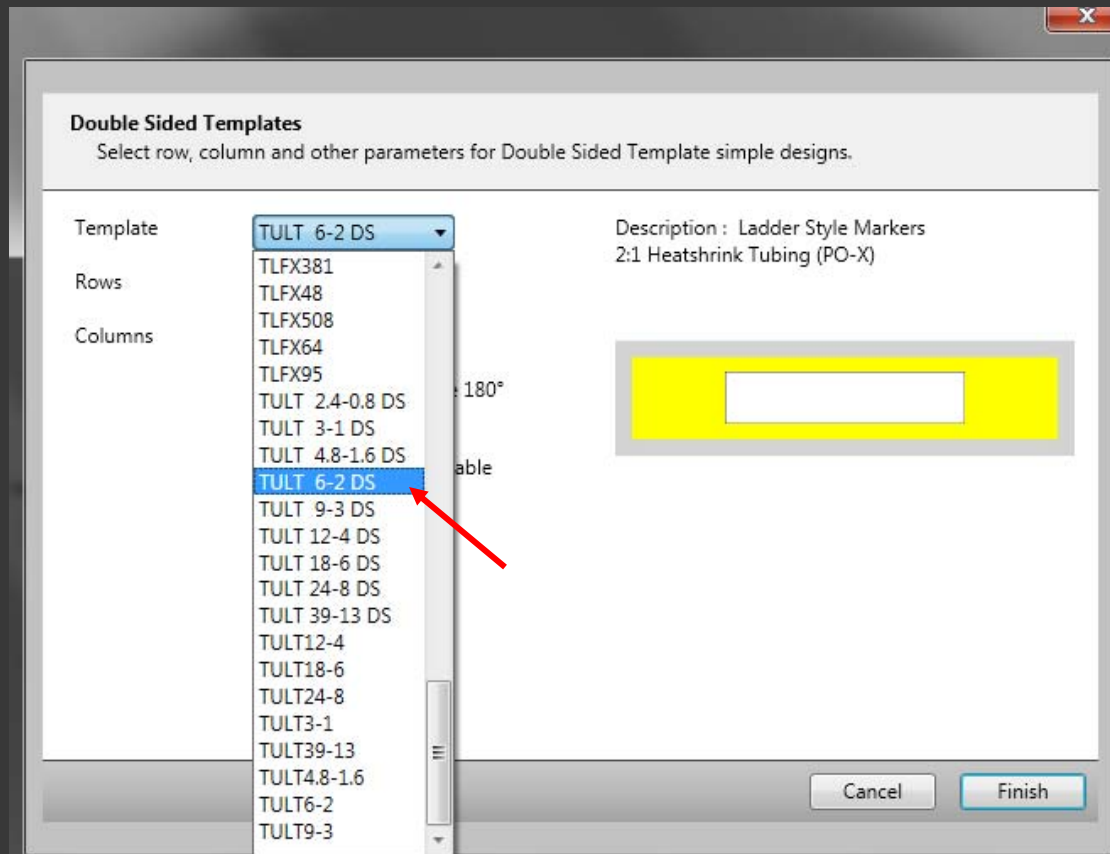
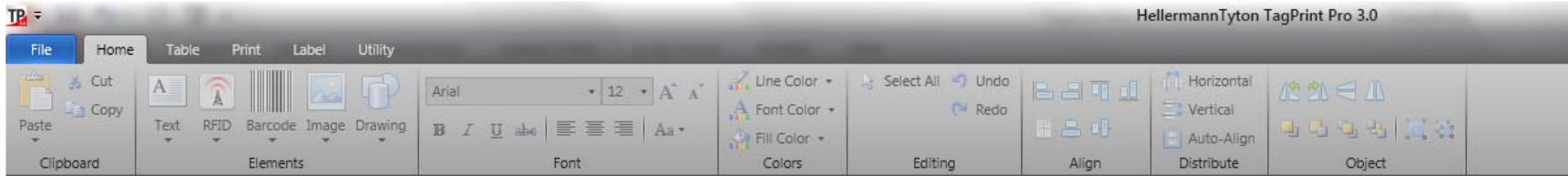


Click on FILE, then click on CREATES A NEW DOUBLE SIDED DESIGN LABEL.

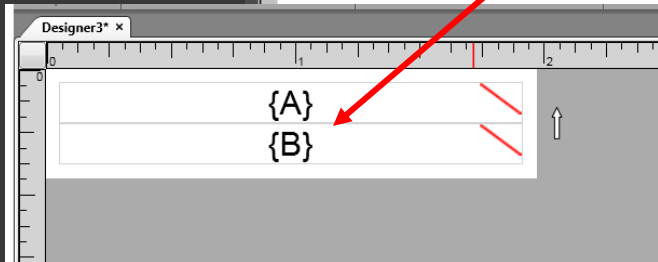
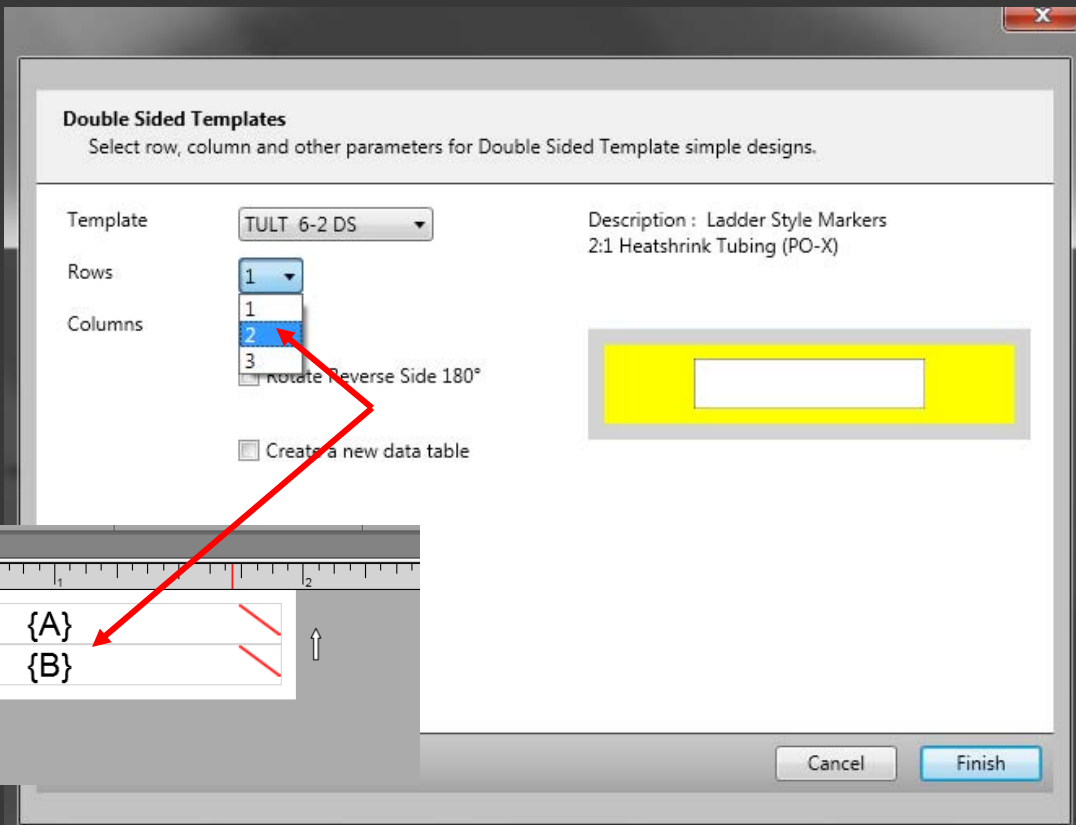
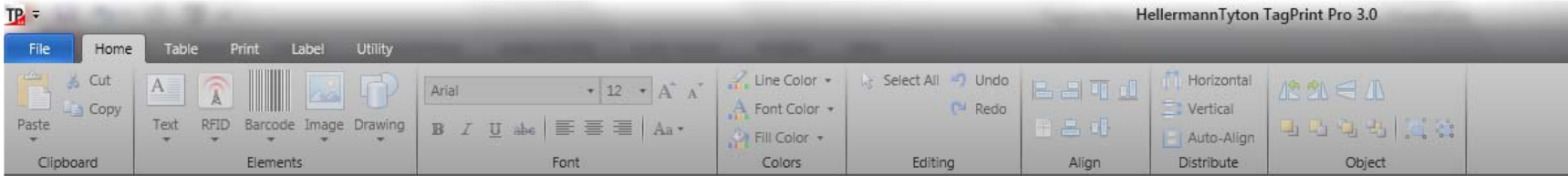


3.0  
3.0

Templates must be first created as a “Doubled Sided Template” which means that the template option for “Double Sided Template” must be selected as “ON” to appear in the listing.



Select a double sided product from the list. The templates are not broken out into slit and non-slit options. These options are selected next.



Selecting 2 rows, as example, would appear as shown when printed or in preview mode.



### Double Sided Templates

Select row, column and other parameters for Double Sided Template simple designs.

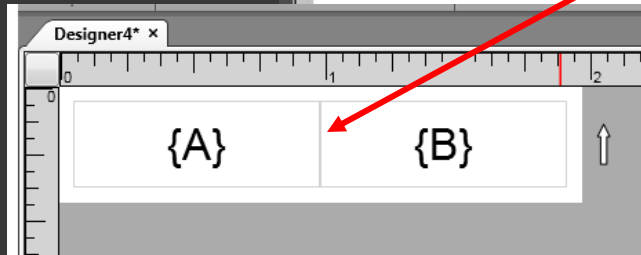
Template: TULT 6-2 DS

Description: Ladder Style Markers  
2:1 Heatshrink Tubing (PO-X)

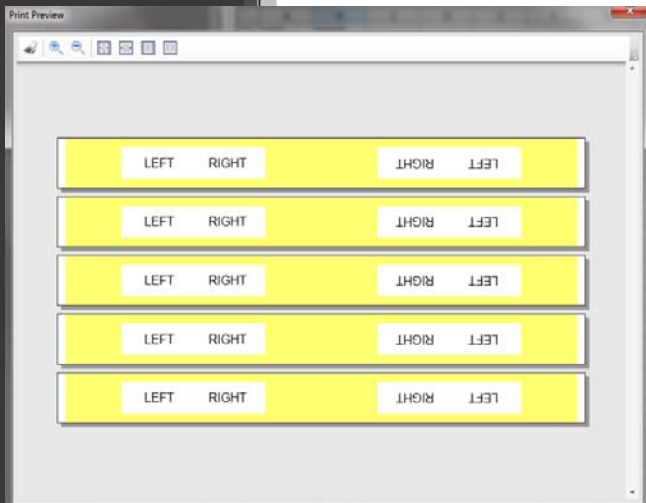
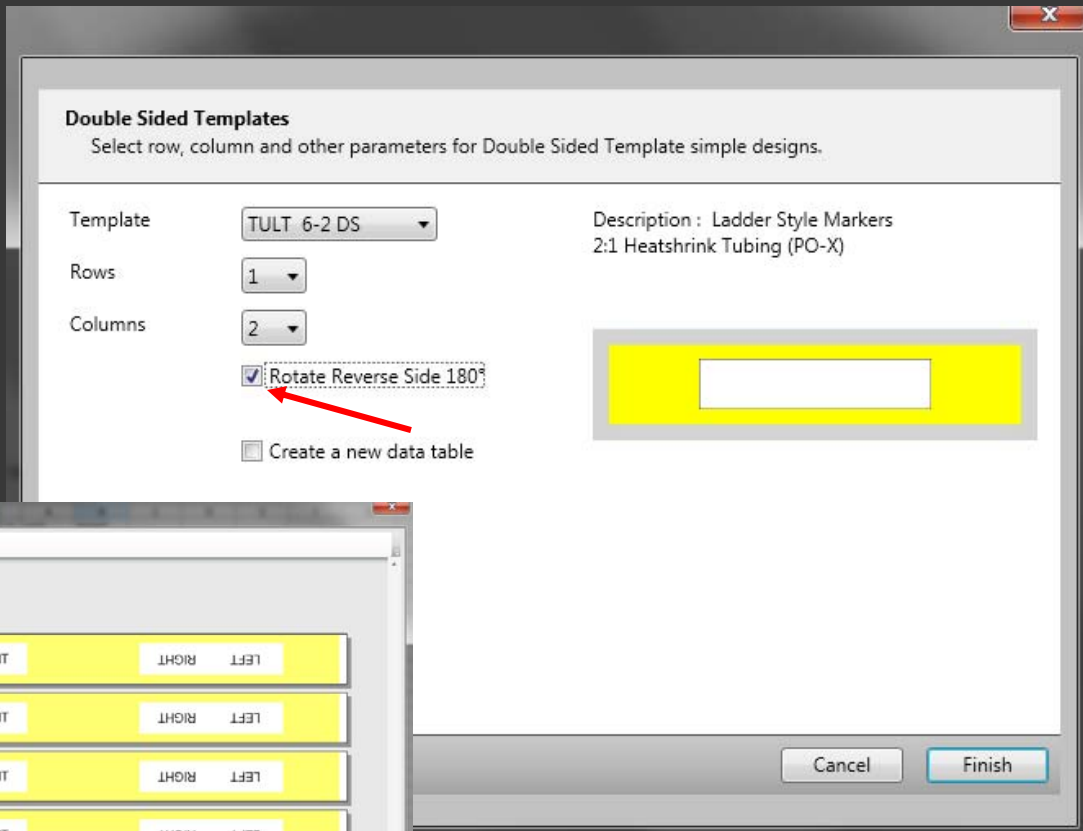
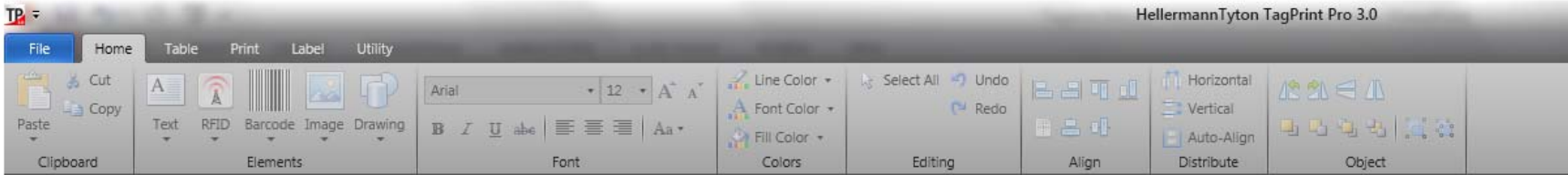
Rows: 1

Columns: 1, 2, 3

Create a new data table

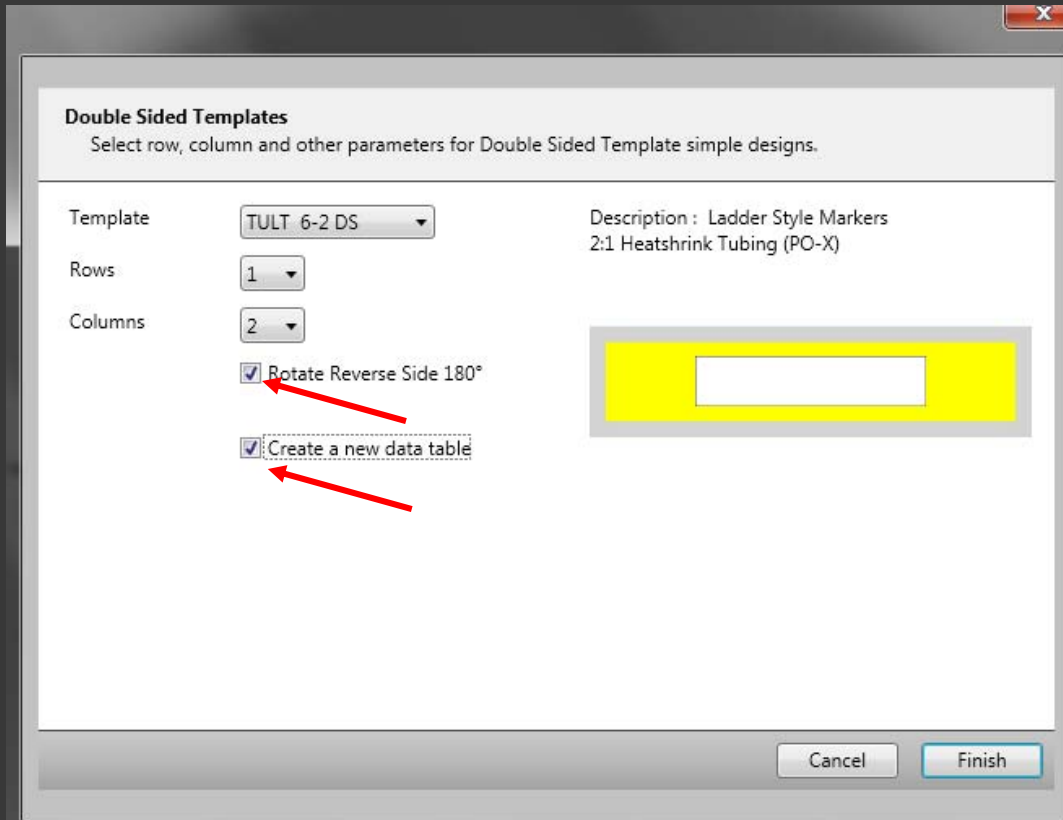


Selecting 2 columns, as example, would appear as shown when printed or in preview mode. This is used for single slit or double slit products. Column and row selections can be mixed and matched.



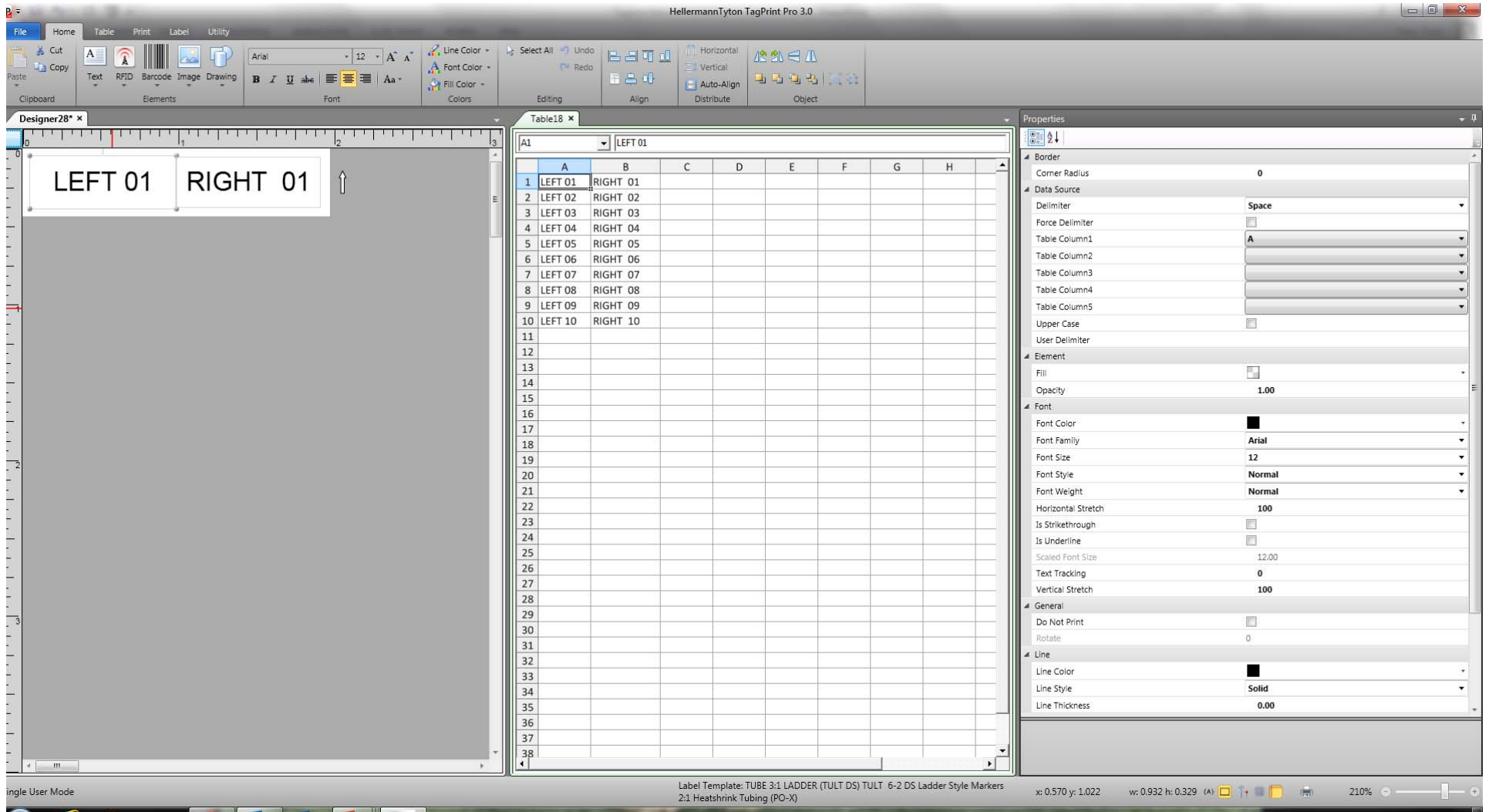
Selecting 2 columns, as example, and checking the box marked as “Rotate Reverse side 180 degrees” will appear as follows during printout.

3.0  
3.0

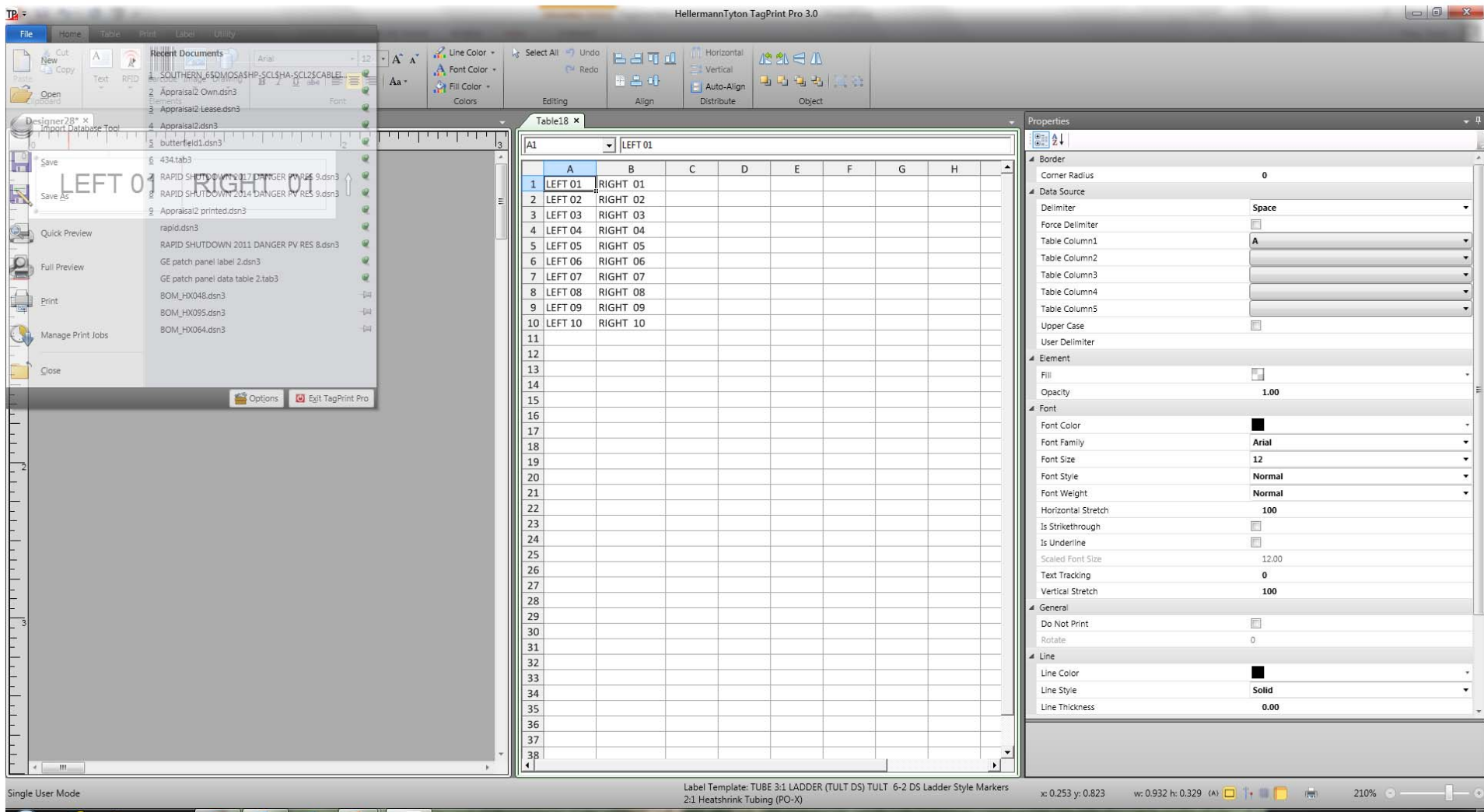


In this example, we select two columns, check the box for rotate reverse side 180 degrees and create a new data table.





In this example, we select two columns, added data to the table and select PRINT PREVIEW.



SELECT FILE – FULL PREVIEW or PRINT.



LEFT 01	RIGHT 01	LEFT 01	RIGHT 01
LEFT 02	RIGHT 02	LEFT 02	RIGHT 02
LEFT 03	RIGHT 03	LEFT 03	RIGHT 03
LEFT 04	RIGHT 04	LEFT 04	RIGHT 04
LEFT 05	RIGHT 05	LEFT 05	RIGHT 05
LEFT 06	RIGHT 06	LEFT 06	RIGHT 06
LEFT 07	RIGHT 07	LEFT 07	RIGHT 07
LEFT 08	RIGHT 08	LEFT 08	RIGHT 08