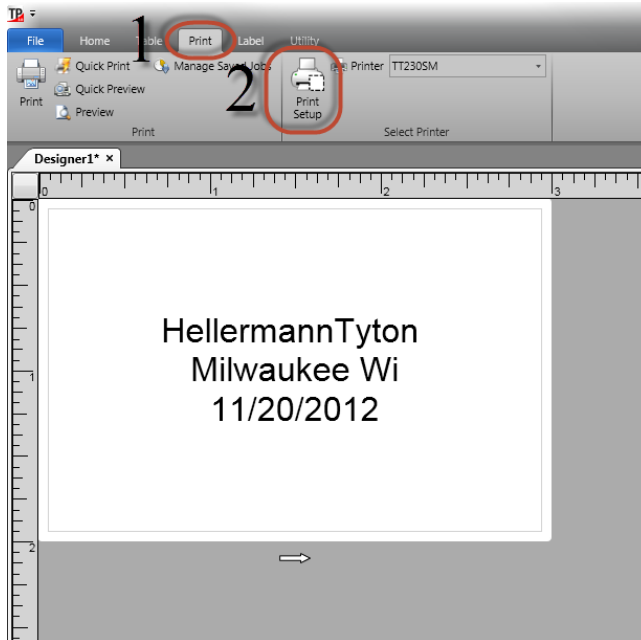
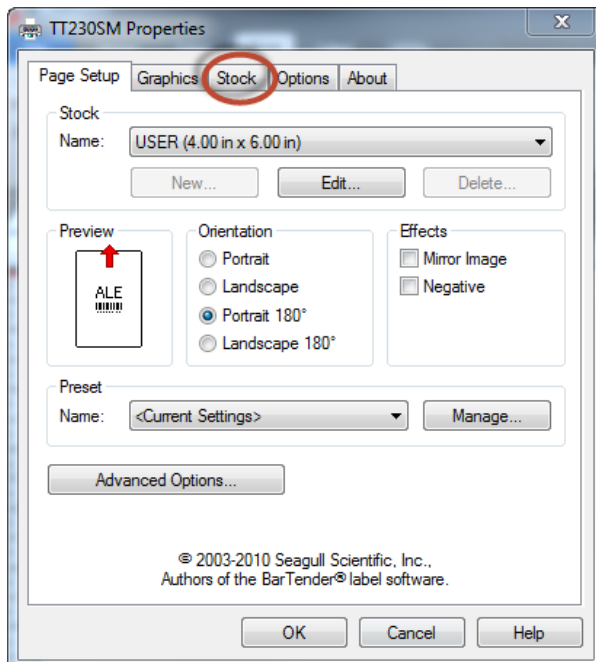


# Configure printing for Continuous Media in TagPrint Pro 3.0

1. In TagPrint Pro 3.0, select the (1)“Print” ribbon, then select (2)“Print Setup”



2. In the Print Setup window, select the “Stock” tab.



- Under the (1) “Type” drop-down, then select (2) “Continuous.” Complete the action by pressing (3) “OK.”

