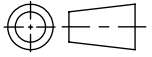
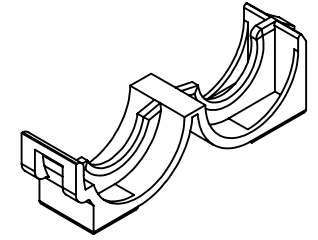
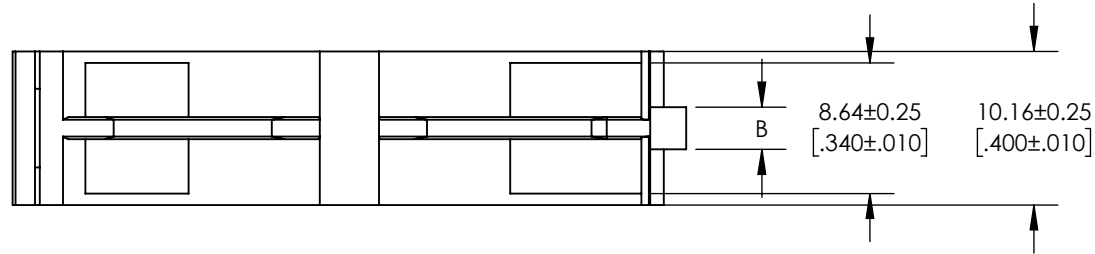


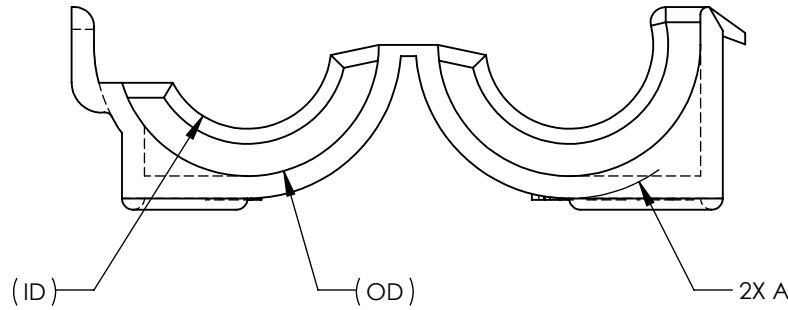
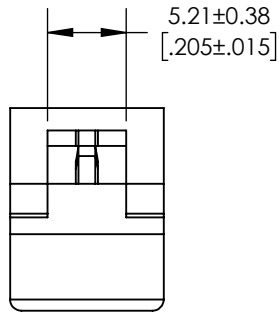
SW



Revision level			Revision Record	Changed	Date	Approved	Date
Drawing	State	Part					
01.1	Design Release	-	SEE ECN# 14605	CTF	08/24/2018	KAC	08/24/2018



ISOMETRIC VIEW  
SCALE 1 : 1



GLOBAL PART DESCRIPTION	GLOBAL PROJECT NUMBER	TYPE	SUPERCEDES DCS PART NUMBER	FOR CONDUIT ID	CONDUIT DIAMETER		DIM "A"	DIM "B"
					(OD)	(ID)		
CTHC-EC4-PP-BK	18-2015	CTHC-EC4	08911378	10.31 [.406]	15.2 [0.60]	11.1 [0.44]	R 10.16 [0.400]	2.8 [0.11]
CTHC-EC5-PP-BK	18-2016	CTHC-EC5	08911377	12.52 [.493]	17.8 [0.70]	13.1 [0.52]	R 10.16 [0.400]	2.5 [0.10]
CTHC-EC7-PP-BK	18-2017	CTHC-EC7	08917625	19.05 [.750]	25.1 [0.99]	19.3 [0.76]	R 15.24 [0.600]	2.5 [0.10]

Material  
PP IM BLK PER DCS  
M2097001

Units: **millimeters**  
Dimension without tolerances details to:  
.xxx = ±.013  
.xx = ±.13  
.x = ±.3  
None = ±.8  
∠ = ±0.5°  
Dimension Formatted mm/[in]

The copyright of this drawing is reserved by HellermannTyton. It is issued on condition that it is not reproduced, copied, or disclosed to a third party, either wholly or in part, without the consent of HellermannTyton.

Drawn CTF 08/24/2018  
Approved KAC 08/24/2018

**HellermannTyton**  
North America  
Email: corp@htamericas.com  
Web: www.hellermann.tyton.com

Article/Type-No SEE CHART  
Title **LOOM TUBING END CLAMP**  
Drawing-No PRODUCTION : Phase  
**18-2015-001-CSU**

Scale 2:1  
Project Number PRP 18-2015  
Format AH  
Sheet 1/1