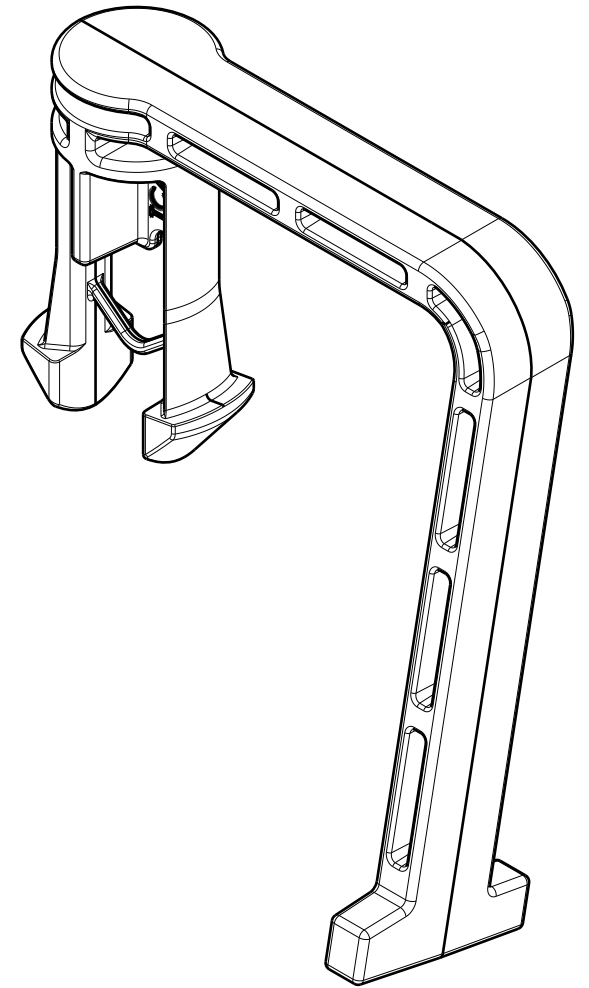
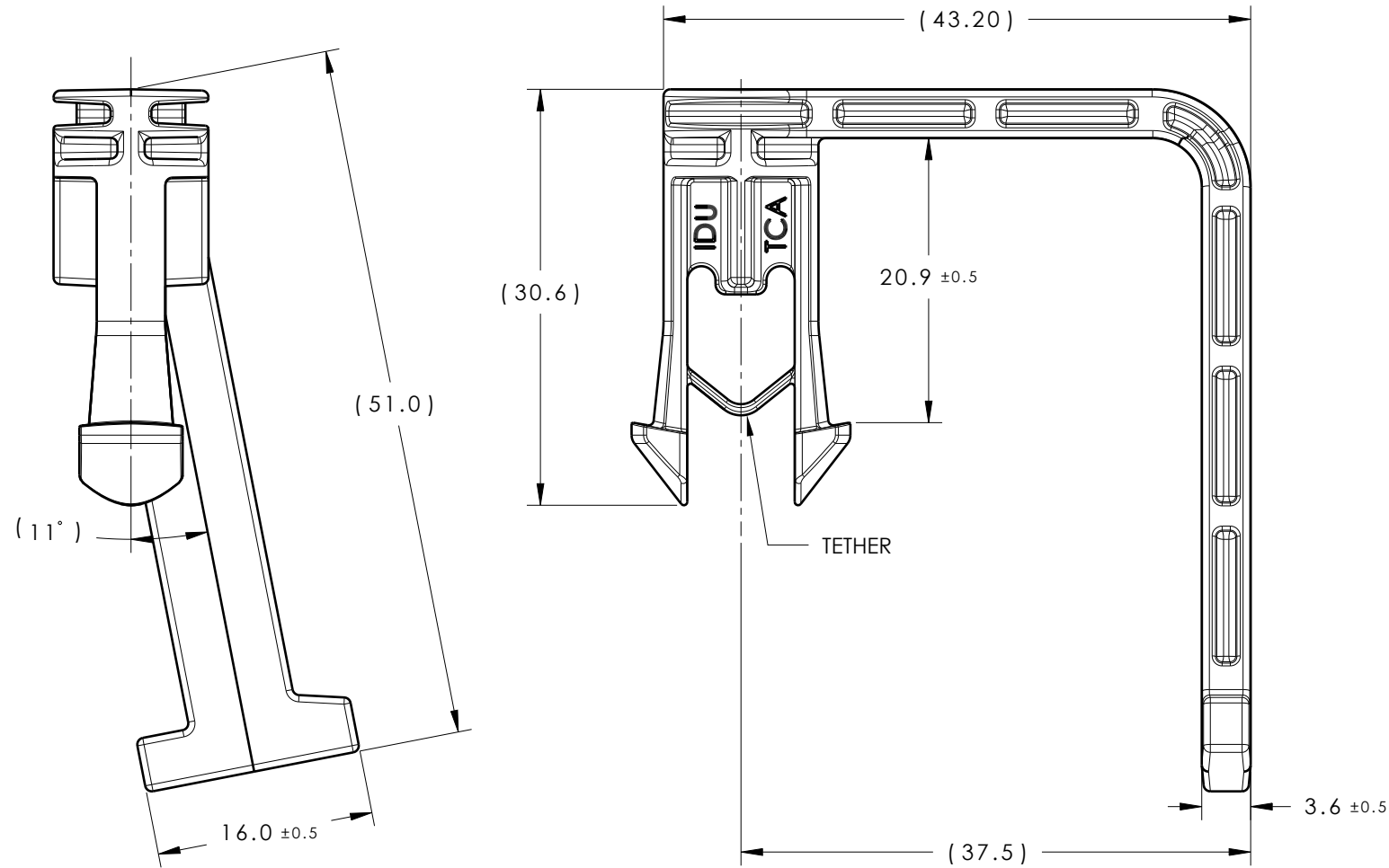
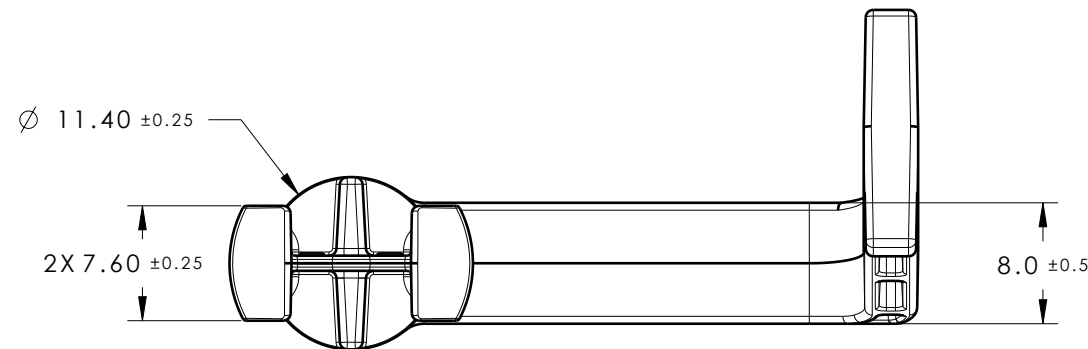


| Revision Level |                |      | Revision Record | Changed | Date     | Approved | Date     |
|----------------|----------------|------|-----------------|---------|----------|----------|----------|
| Drawing        | State          | Part |                 |         |          |          |          |
| 03.1           | Design Release |      | SEE ECN# 015164 | NHK     | 05/23/19 | HDC      | 05/23/19 |



ISOMETRIC VIEW



- REFERENCE:  
 PERFORMANCE REQUIREMENTS AT DRY AS MOLDED:  
 1. MOUNT PUSH IN FORCE: 45 NEWTONS (10 LBS) MAX IN THE APPLICABLE NOMINAL HOLE SIZE AND A PLATE THICKNESS OF 14.25mm.  
 2. MOUNT PULL OUT FORCE: 110 NEWTONS (25 LBS) MIN IN THE APPLICABLE NOMINAL HOLE SIZE AND A PLATE THICKNESS OF 14.25mm.  
 3. SHEET METAL THICKNESS RANGE: 13.5mm - 15.0mm  
 4. APPLICABLE HOLE SIZE:  
 A. 12.35mm +/-0.65  
 5. MAXIMUM PERCENT REGRIND PERMISSIBLE: 25%  
 6. MAX ALLOWABLE FLASH TO BE: 0.25 mm  
 7. MAX ALLOWABLE MISMATCH TO BE: 0.1 mm  
 8. IF THE TETHER IS FRACTURED THE PART WILL STILL FUNCTION AS INTENDED.  
 9. SINK MARKS ARE ACCEPTABLE ON TAPE BAR IF THEY DO NOT AFFECT FIT, FORM, OR FUNCTION.

|                                  |  |  |  |     |          |                 |   |                  |         |
|----------------------------------|--|--|--|-----|----------|-----------------|---|------------------|---------|
| Material<br><br>COLOR: SEE CHART | Units<br><b>millimeters</b><br><br>Tolerance defined on each dimension | The copyright of this drawing is reserved by HellermannTyton. It is issued on condition that it is not reproduced, copied or disclosed to a third party, either wholly or in part, without the consent of HellermannTyton. | Drawn  | RJE | 11/07/17 | Article/Type-No | BCATC90DEG                              | Scale            | 2:1     |
|                                  |  |  | Approved   | EJH | 11/07/17 | Title           | TRANSMISSION MOUNT WITH 90 DEG TAPE BAR | Project Number   | 17-2489 |
|                                  |  |  | <br>North America<br>Email: corp@htamericas.com<br>Web: www.hellermann.tyton.com |     |          | Drawing-No      | 17-2489-001-CSU                         | PRODUCTION Phase | 03.1    |
|                                  |  |  |  |     |          | Format          | B                                       | Sheet            | 1/1     |