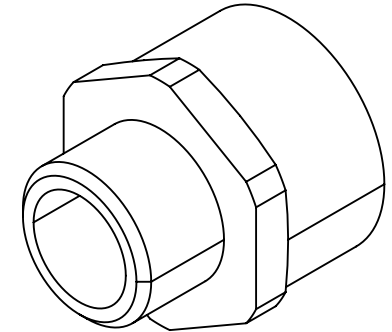
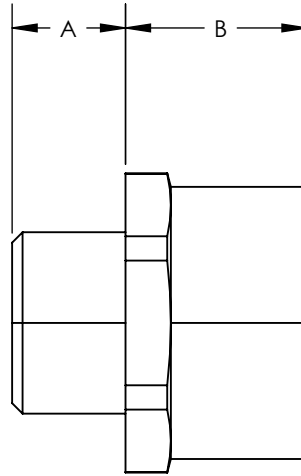
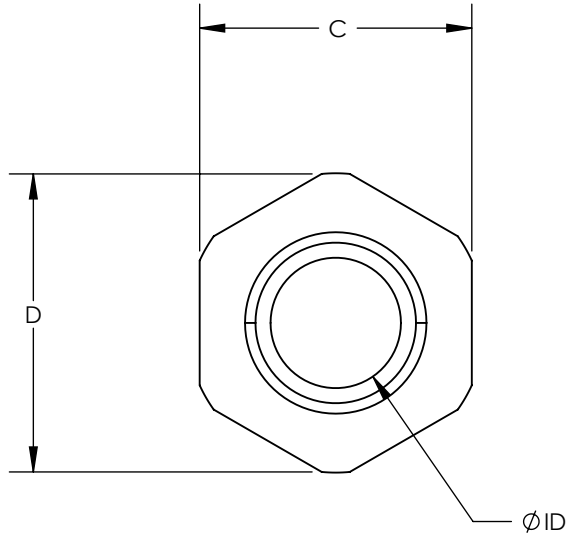


SW2014



Revision level			Revision Record	Changed	Date	Approved	Date
Drawing	State	Part					
00.0	Design Release		SEE ECN# 013630	GRW	11/28/2016	KAC	11/28/2016



- NOTES:
 1. OPERATING TEMPERATURE -58° F TO +57° F (-50° C TO +300° C)
 2. RoHS
 3. HF
 4. IP68 WITH SUITABLE SEALING WASHER

HellermannTyton Part Number	Manufacturer Reference Number	External (Male) Thread	Internal (Female) Thread	Design Type	Dimensions									
					A		B		C		D		ID	
					in.	mm	in.	mm	in.	mm	in.	mm	in.	mm
B-050-M20	B-050-M20	1/2" NPT	M20	2	0.51	13.0	0.62	15.5	1.03	26.4	0.94	24.0	0.57	14.4
B-075-M20	B-075-M20	3/4" NPT	M20	1	0.59	15.0	0.18	4.5	1.27	31.9	1.14	29.0	0.72	18.4
B-075-M25	B-075-M25	3/4" NPT	M25	2	0.59	15.0	0.31	8.0	1.27	31.9	1.14	29.0	0.76	19.4
B-100-M32	B-100-M32	1" NPT	M32	1	0.63	16.0	0.26	6.5	1.52	38.5	1.38	35.0	1.20	30.4

Material
 NICKEL PLATED BRASS

Units: inches
 Dimension without tolerances details to:
 .xxxx = ±.0005
 .xxx = ±.005
 .xx = ±.01
 .x = ±.03
 None = ±.06
 < = ±0.5°
 Dimension Formatted in [mm]

The copyright of this drawing is reserved by HellermannTyton. It is issued on condition that it is not reproduced, copied, or disclosed to a third party, either wholly or in part, without the consent of HellermannTyton.

Drawn GRW 11/28/2016
 Approved KAC 11/28/2016

HellermannTyton
 North America
 Email: corp@htamericas.com
 Web: www.hellermann.tyton.com

Article/Type-No CNV SERIES
 Title **HELAGUARD THREAD CONVERTER, METRIC INTERNAL THREADS AND NPT EXTERNAL THREADS**
 Drawing-No PRODUCTION : Phase
16-1973-001-CSU

Scale
 Project Number PRP 16-1973
 Format AH
 Sheet 1/1