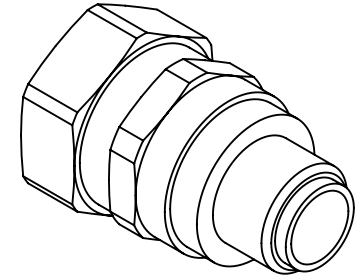
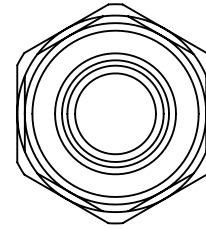
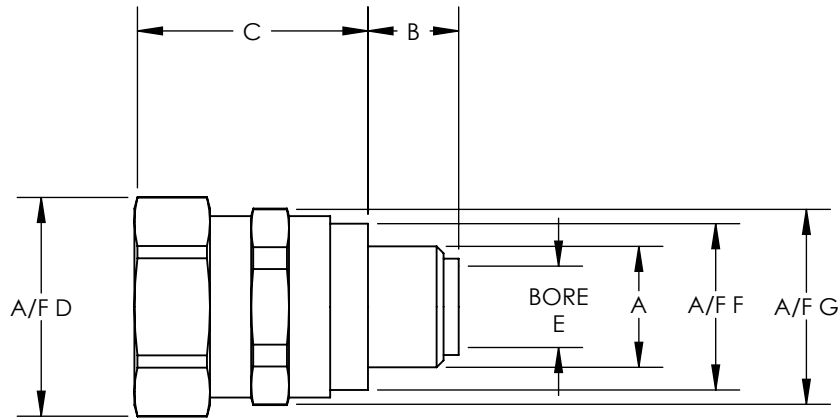


SW2014



Revision level			Revision Record	Changed	Date	Approved	Date
Drawing	State	Part					
00.0	Design Release		SEE ECN# 013639	GRW	12/1/2016	KAC	12/1/2016



NOTES:

1. OPERATING TEMPERATURE -58° F TO +275° F (-50° C TO +135° C)
2. RoHS & HF
3. IP RATING IP68 + IP67 + IP68+ IP69
4. FITS WITH UL360 SIZES
5. FLAMMABILITY SELF-EXTINGUISHING(EN 61386)
6. UL LISTED TO UL514B
7. PULL-OFF TENSILE STRENGTH 265 LBS (120KG)

Conduit Size		HellermannTyton Part Number	Manufacturer Reference Number	Metric Thread	Dimension (mm)											
				A	B		C		D		E		F (A/F)		G	
					in	mm	in	mm	in	mm	in	mm	in	mm	in	mm
5/16	12.0	LTP12-M16-S	LTP12-M16-S	M12 X 1.5	0.39	10.0	1.14	29.0	0.87	22.0	0.34	8.6	0.79	20.0	0.79	20.0
3/8	16.0	LTP16-M16-S	LTP16-M16-S	M16 X 1.06	0.39	10.0	1.22	30.9	1.02	26.0	0.42	10.7	0.94	24.0	0.94	24.0
3/8	16.0	LTP16-M20-S	LTP16-M20-S	M20 X 1.5	0.39	10.0	1.22	31.0	1.02	26.0	0.42	10.7	0.94	24.0	0.94	24.0
1/2	20.0	LTP20-M20-S	LTP20-M20-S	M20 X 1.5	0.39	10.0	1.25	31.8	1.14	29.0	0.57	14.5	1.02	26.0	1.02	26.0
3/4	25.0	LTP25-M25-S	LTP25-M25-S	M25 X 1.5	0.47	12.0	1.52	38.7	1.38	35.0	0.71	18.0	1.14	29.0	1.30	33.0
1	32.0	LTP32-M32-S	LTP32-M32-S	M32 X 1.5	0.51	13.0	1.73	43.9	1.65	42.0	0.97	24.6	1.50	38.0	1.57	40.0
1-1/4	40.0	LTP40-M40-S	LTP40-M40-S	M40 X 1.5	0.55	14.0	1.83	46.5	2.05	52.0	1.29	32.7	1.89	48.0	1.97	50.0
1-1/2	50.0	LTP50-M50-S	LTP50-M50-S	M50 X 1.5	0.59	15.0	1.96	49.8	2.28	58.0	1.48	37.7	2.28	58.0	2.28	58.0

Material
NICKEL PLATED BRASS
& POLYAMIDE 6

Units: inches

Dimension without tolerances details to:
 .xxxx = ±.0005
 .xxx = ±.005
 .xx = ±.01
 .x = ±.03
 None = ±.06
 < = ±0.5°
 Dimension Formatted in/[mm]

The copyright of this drawing is reserved by HellermannTyton. It is issued on condition that it is not reproduced, copied, or disclosed to a third party, either wholly or in part, without the consent of HellermannTyton.

Drawn GRW 12/1/2016

Approved KAC 12/1/2016

HellermannTyton

North America
 Email: corp@htamericas.com
 Web: www.hellermann.tyton.com

Article/Type-No LTP-C-S SERIES

Title
**HELAGUARD SWIVEL THREAD STRAIGHT
 COMPRESSION FITTING FOR LTP METALLIC
 CONDUIT WITH LIQUID-TIGHT COVER**

Drawing-No PRODUCTION : Phase

16-1971-001-CSU

Scale

Project Number

PRP 16-1971

Format AH

Sheet 1/1