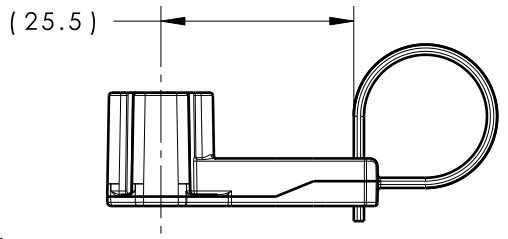
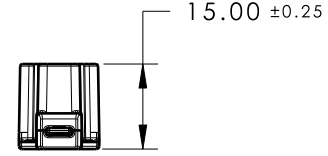
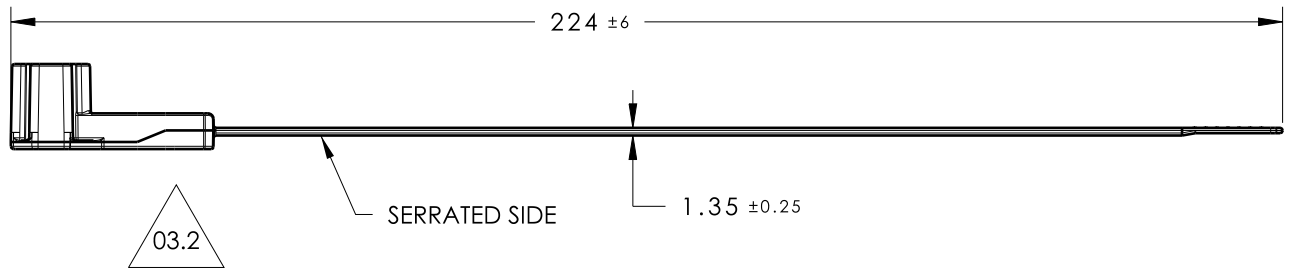
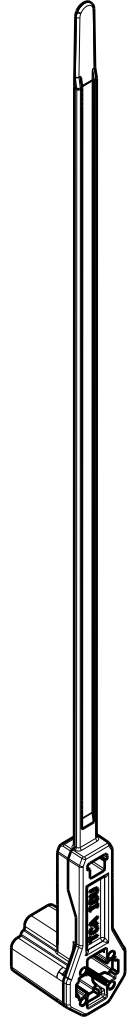


Revision Level			Revision Record	Changed	Date	Approved	Date
Drawing	State	Part					
03.2	Design Release		SEE ECN# 013937	RJE	07/06/17	KVH	07/06/17



ASSEMBLED VIEW  
SCALE 1:1



ISOMETRIC VIEW

- REFERENCE:  
PERFORMANCE REQUIREMENTS AT DRY AS MOLDED:
1. STUD MOUNT PUSH ON FORCE: 45 NEWTONS (10 LBS) MAX ON EACH APPLICABLE STUD SIZE
  2. STUD MOUNT PULL OFF FORCE: 223 NEWTONS (50 LBS) MIN ON EACH APPLICABLE STUD SIZE AT 2.0 - 2.5% MOISTURE
  3. APPLICABLE STUD SIZE:  
A. M6 X 1
  4. CABLE TIE MIN LOOP TENSILE STRENGTH: 223 NEWTONS (50 LBS)
  5. BUNDLE RANGE: 2.0mm TO 50.0mm
  6. MAXIMUM PERCENT REGRIND PERMISSIBLE: 25%
  7. MAX ALLOWABLE FLASH OR MISMATCH TO BE: TBD

MATERIAL	COLOR
PA66HIRHS	BLACK
PA46	BROWN

Material SEE CHART COLOR: SEE CHART	Units	millimeters	The copyright of this drawing is reserved by HellermannTyton. It is issued on condition that it is not reproduced, copied or disclosed to a third party, either wholly or in part, without the consent of HellermannTyton.	Drawn	EJF	11/11/16	Article/Type-No	T50ROSM6SMS025	Scale	3:4	
	Tolerance defined on each dimension	Approved		KVH	11/15/16	Title	T50ROS CABLE TIE WITH M6 STUD MOUNT & 25mm OFFSET		Project Number	16-1636	
		North America Email: corp@htamericas.com Web: www.hellermann.tyton.com			Drawing-No	Production : Phase		Format	AH		
					16-1636-001-CSU			Sheet	1/1		