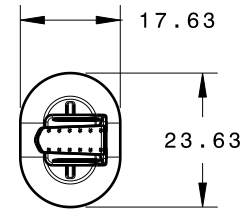
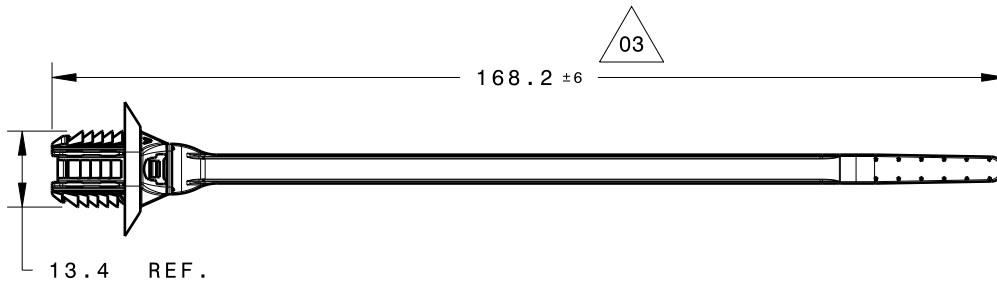


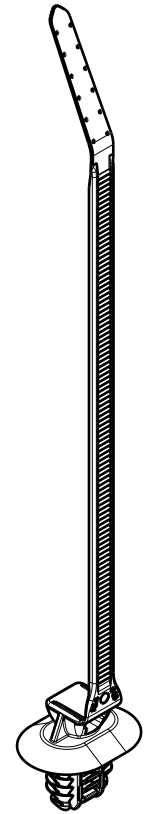
REFERENCE:

PERFORMANCE REQUIREMENTS AT DRY AS MOLDED:

1. FIR TREE PUSH IN FORCE: REF. 10 LBS MAX IN EACH APPLICABLE OVAL HOLE SIZE AND A PLATE THICKNESS OF 1.8mm
2. FIR TREE PULL OUT FORCE: REF. 25 LBS MIN IN EACH APPLICABLE OVAL HOLE SIZE AND A PLATE THICKNESS OF 1.8mm
3. SHEET METAL THICKNESS RANGE: 0.60mm - 6.0mm
4. APPLICABLE OVAL HOLE SIZES:
 - A. 6.2 X 12.2mm
 - B. 6.5 x 12.5mm
 - C. 6.5 x 13.0mm
 - D. 7.0 x 12.0mm
5. MINIMUM BUNDLE RANGE: 1.8mm - 35.0mm
6. CABLE TIE MINIMUM TENSILE: 50lbs



REF.



Isometric view



MATERIAL	COLOR
PA66HS	BLACK
PA66HS	GRAY
PA66HIRHS	BLACK
PA46	BROWN

INVENTORS

HellermannTyton[®]

ALL PROPRIETARY RIGHTS IN THE SUBJECT MATTER SHOWN ON THIS DRAWING ARE EXCLUSIVE PROPERTY OF HELLERMANNTYTON

name	date	city, state
S. ADAMS	5/5/11	MENOMONEE FALLS, WI.

REVISIONS

level	by	date	ECN #	part level
03	KVH	11/8/12	012221	A

DIMENSIONS

TOLERANCES	units
.XXXX = ± 0.25	millimeters
.XXX = ± 0.50	
.XX = ± 1.00	
.X = ± 2.00	
∠ = ± 1.00	
unless otherwise specified	

PART

number	T50SOSFTOVALU	phase	PRODUCTION
name	OVAL HOLE FIR TREE WITH 6" 50LB LOW PROFILE CABLE TIE		
material	SEE CHART		

DRAWING

FORMAT	AH	CAD	CATIA V5	SCALE	3:4
VERSION	J				
A- SIZE (landscape)_N01	previous drawing number				
drawn	S. ADAMS	checked	M. TOLL	approved	
	5/5/11		4/4/12		
type	CUSTOMER		sheet 1 of 1		
number	11-0345-001-CSU				