

TagPrint® Xpress Quick Start Guide

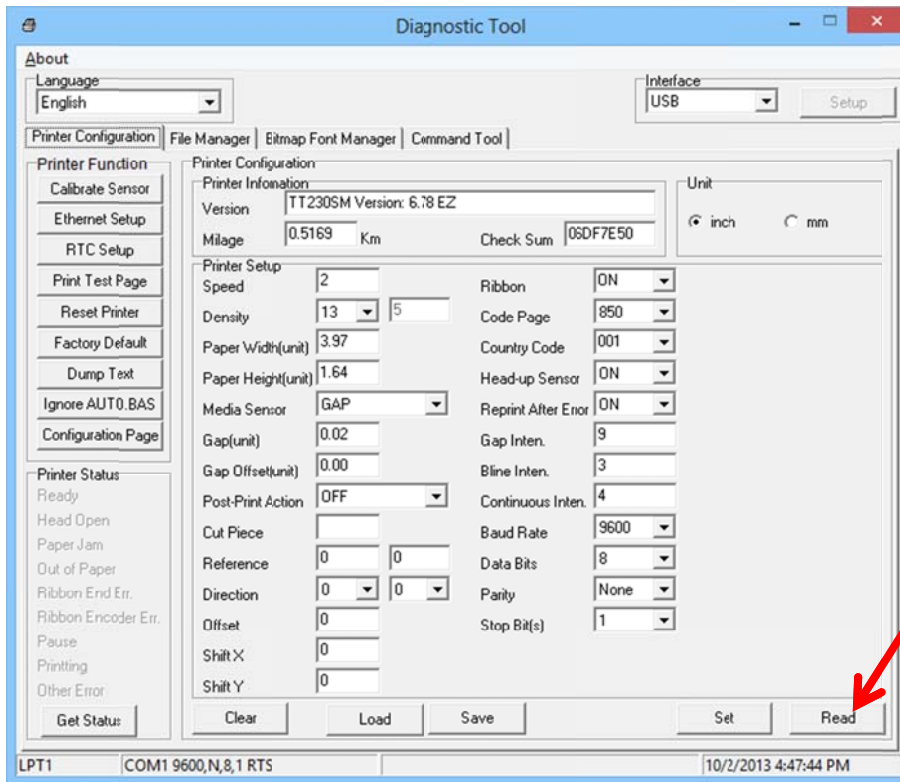
TagPrint® Xpress Solar is an application that is designed to allow solar installers to easily select and print code compliant labels with HellermannTyton brand printers. Simply go to the SOLAR tab in the app and pick a labeling category. Scroll to view labels. Label templates are displayed visually. To print a label, simply tap on the label and choose a quantity. To see the code reference, just tap on the blue “I” to the far right of the label. TagPrint Xpress Solar requires that you have a wireless router and a designated IP address for your printer. TagPrint Xpress Solar also may be used as an NEC 2014 code reference guide. To view the associated NEC code, tap on a label.

The steps below outline how to set up your printer on the TagPrint Xpress Solar app, select labels and print.

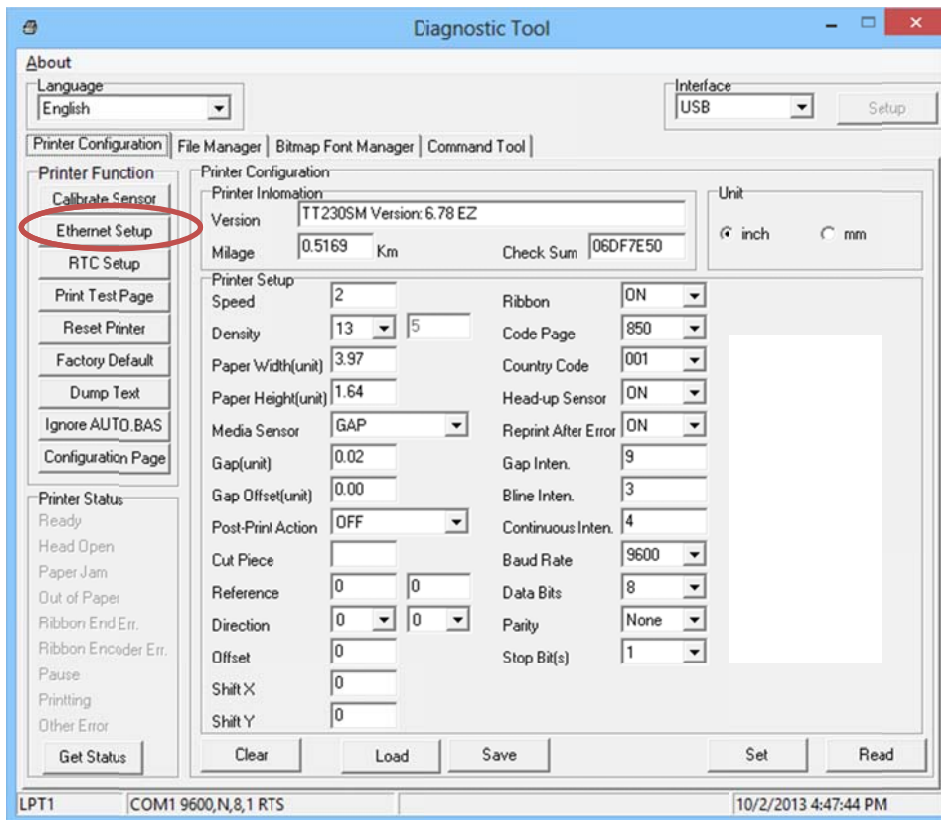
Thank you for downloading TagPrint Xpress Solar, HellermannTyton’s quick and easy solution to NEC code compliance. This guide will give you a brief overview of how to connect your HellermannTyton TT130SMC/TT230SM/TT230SMC/TTM430 and TTM460 thermal transfer printers to a network and print solar installation labels using TagPrint Xpress Solar. If you need more detailed information, please refer to the full TagPrint Xpress Solar User’s Guide which is available on the support page at: <http://www.hellermann.tyton.com/about.aspx?id=3604>

Step 1: Connecting the printer to the network

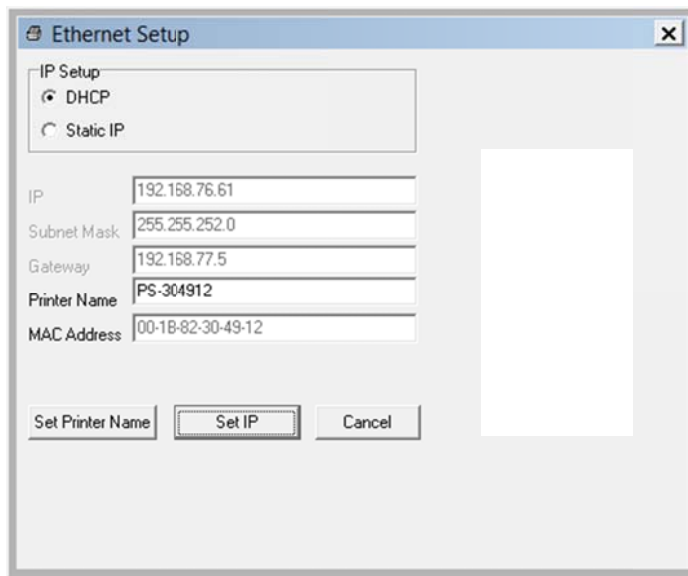
1. For initial printer setup, you will need to determine the printer’s IP address. The easiest way to do this is by connecting the printer to a computer and installing the printer driver. To start this process, connect the HellermannTyton brand printer to a computer using the USB cable included with the printer. It’s important to note that only HellermannTyton brand printers will print using the TagPrint Xpress Solar mobile app.
2. Turn on the power to the HellermannTyton printer (TT130SMC, TT230SM, TT230SMC, TTM430, TTM460).
3. A USB stick with the printer’s driver comes standard with each printer. Locate the USB stick and plug it into the computer. Once loaded, click on the file “DiagTool_V1.54.exe.” Select “Read” from the bottom right corner to get information about the printer.



4. Select "Ethernet Setup" on the left side of the Diagnostic Tool screen.



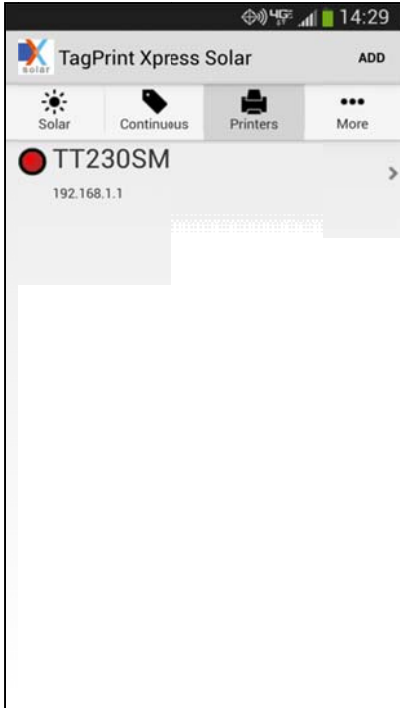
5. Choose between “Static IP” and “DHCP”. If using DHCP network protocol is preferred, write down the IP address shown on the screen and jump to Step 9. If using a static IP address, continue to Step 6.



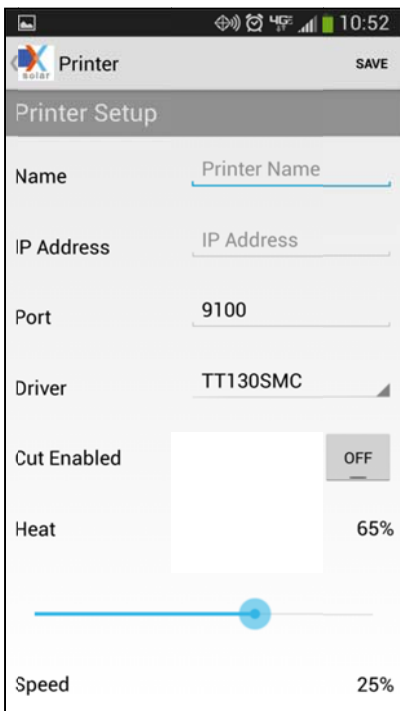
6. Enter an unaddressed IP address and the correct Subnet Mask.
7. Select “Set” in the bottom right corner of the Diagnostic Tool Window.
8. Close the Diagnostic Tool.
9. Connect the printer to the network using an Ethernet cable.

Step 2: Adding the printer to TagPrint Xpress Solar

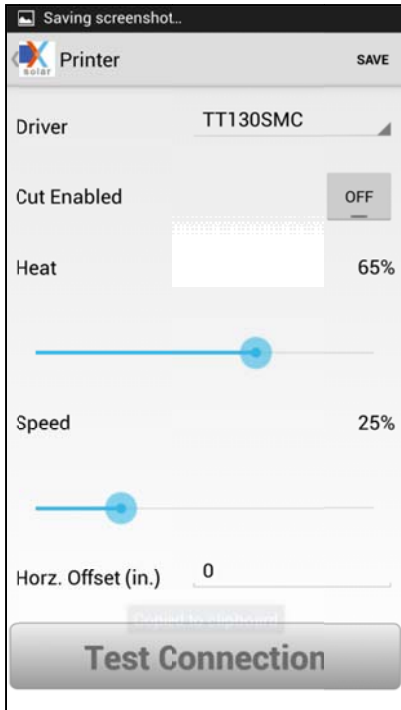
1. Open the TagPrint Xpress Solar app.
2. Navigate to the “Printers” tab.
3. Select the “Add” button in the top right corner



4. Enter a name for the printer. This name can be anything that will be memorable.



5. Enter the printer's IP address as identified in Step 1.
6. If the printer has a cutter, select "Cut Enabled." All other options should remain default.
7. Select "Test Connection" to verify that the printer and the app are on the same network.

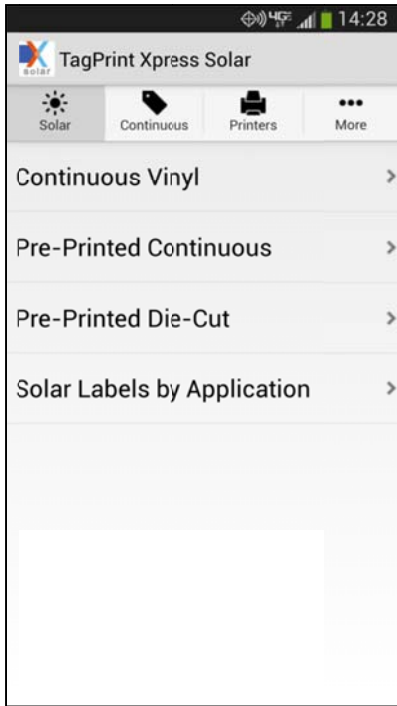


8. Select "Save."

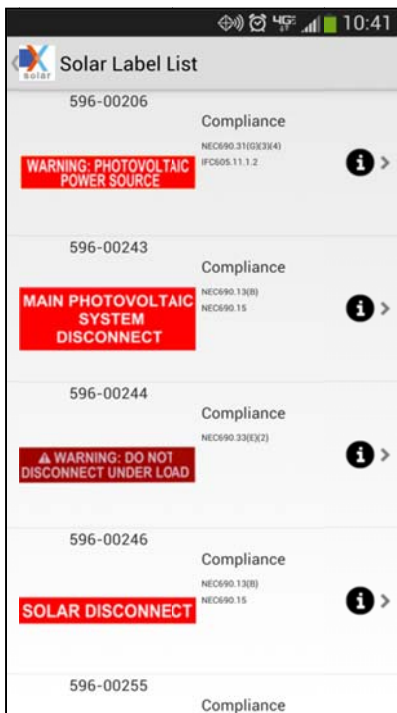
Step 3: Printing a label

For this example, we will be showing how to print the 596-00206 continuous vinyl label on a TT130SMC printer. Similar steps can be followed to print each of the labels available on TagPrint Xpress Solar. For full descriptions of each type of label, please refer to the User's Guide.

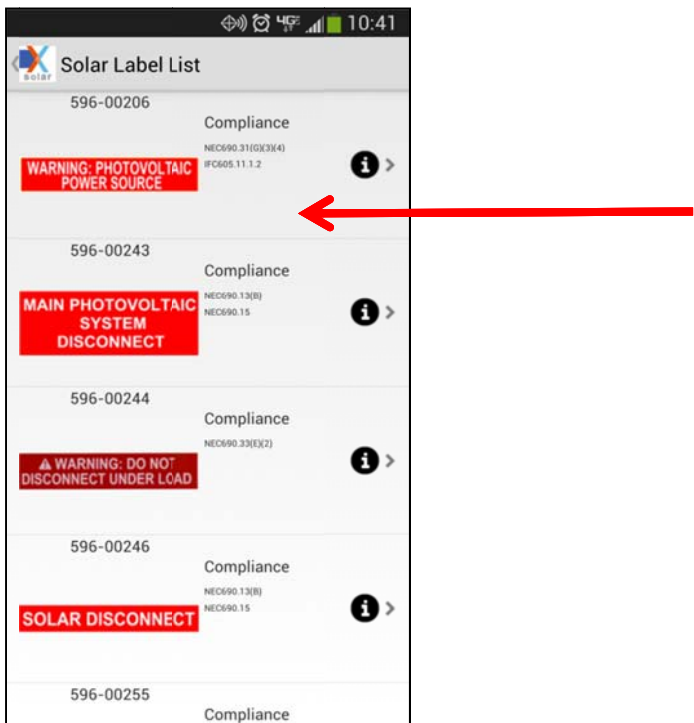
1. Navigate to the "Solar Labels" tab.
2. Select "Continuous Vinyl".



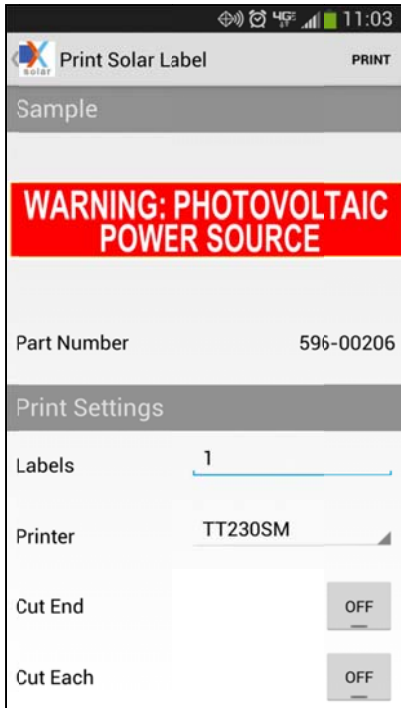
3. Select the blue circle with an "i" in it to view and read the related NEC 2014 code.



4. The associated code reference is displayed. Press "Back" to go back to the label selection screen. Tap or touch the label to bring up the print menu as shown below.



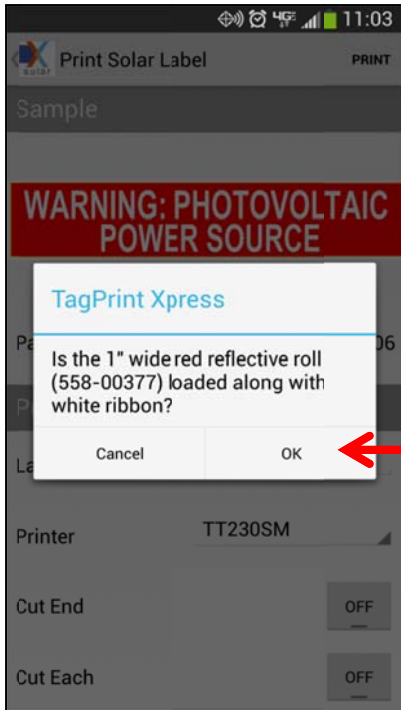
5. Select the "596-00206" label by tapping on the image of the label.



6. Select the number of labels to be printed. Make sure that the proper printer is selected from the printer list. If the printer includes a cutter, select the cut setting that is desired. “Cut End” means that the labels will be cut after all of them have been printed. “Cut Each” means that the labels will be cut as each one is printed. To begin printing, press “Print” in the top right corner.



7. A prompt will appear, confirming that both the white printer ribbon and the 1” wide reflective red roll label stock are inserted. To continue to print, select “Confirm”.



The label should print and cut (if a cut option is selected).

For more information about HellermannTyton products, please visit us on the web at www.hellermann.tyton.com.